

# CARDIOVIT AT-1

Bet on this 3-channel  
ECG by SCHILLER!



The CARDIOVIT AT-1 performs quick and accurate 12-lead ECG analysis, in a three channel format, at a price for one-channel systems.

With its compact, easy-to-use operation and built-in battery, the AT-1 is perfect for all applications including stationary office use, hospital bedside and ambulatory field work. Reliable, powerful and low-maintenance, the AT-1 is the ideal cost-effective ECG unit for professional electrocardiography. **Over 60'000 units have been sold worldwide!**

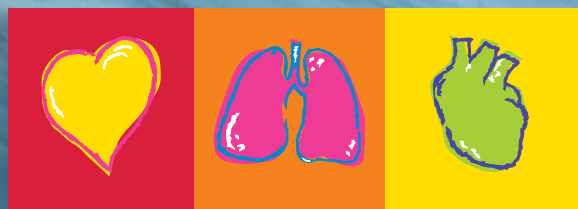
#### 3-channel Resting ECG

- Simultaneous 12-lead acquisition
- 3-channel print format
- One-button operation
- Multiple report formats
- Copy functions
- Various recording rates
- Automatic and manual modes
- Built-in thermal printer
- Built-in, rechargeable battery
- Built-in charger unit
- Lightweight (2,9 kg/6.7 lbs)

#### Options:

- Measurement and interpretation software
- Cart

SCHILLER's commitment to excellence is built upon more than 30 years of experience in the research, development and manufacture of ECG systems. Call us!



# SCHILLER

www.schiller.ch

The Art of Diagnostics

**Asia****SCHILLER Asia-Pacific**

10 C, Jalan SS 3/33  
Taman Universiti  
47300 Petaling Jaya  
Selangor, Malaysia  
Phone +603 78 77 5336  
Fax +603 78 77 5744  
sales@schiller.com.my

**Austria****SCHILLER Handelsgesellschaft mbH**

Kampfmüllerweg 24  
A-4040 Linz  
Phone +43 732 70 99-0  
Fax +43 732 757 000  
sales@schiller.at

**C.I.S. & Russia****SCHILLER AG**

**Moscow Representative Office**  
Office 414, 1-st Yamskogo Polya 15  
125124 Moscow, Russia  
Phone/Fax  
+7 (095) 970 11 33,  
+7 (095) 956 29 10  
mail@schiller-ag.com  
www.schiller-cis.com

**France****SCHILLER Médical S.A.S.**

4, rue Louis Pasteur  
F-67162 Wissembourg/Cedex  
Phone +33 3 88 63 36 00  
Fax +33 3 88 94 12 82  
info@schiller.fr

**Germany****SCHILLER Medizintechnik GmbH**

Rudolf-Diesel-Strasse 14  
D-85521 Otterbrunn  
Phone +49 89 62 99 81-0  
Fax +49 89 609 50 90  
info@schillermed.de

**India****SCHILLER Healthcare India Pvt. Ltd.**

D.C. Silk Mills Compound, 'A' Wing, 1st floor  
5, Chunawala Estate, Kondivitta Lane  
Andheri-Kurla Road, Andheri (E)  
Mumbai - 400 059, India  
Phone +91 22 826 35 20  
Fax +91 22 826 35 25  
schiller@vsnl.com

**Japan****SCHILLER Japan, Ltd.**

Biomedical Research Building 218  
1-2-3 Kasumi, Minami-ku  
Hiroshima 734-8551  
Phone +81 82 250 2055  
Fax +81 82 253 1713  
koji.maekawa@schiller.jp  
www.schiller.jp

**Spain****SCHILLER ESPAÑA, S.A.**

Avenida Baviera, 12 - 14 Posterior  
E-28028 Madrid  
Phone +34 91 713 01 76  
Fax +34 91 355 79 33  
schiller@schiller-es.com

**Switzerland****SCHILLER-Reomed AG**

Riedstrasse 14  
CH-8953 Dietikon  
Phone +41 1 744 30 00  
Fax +41 1 740 37 10  
sales@schiller-reomed.ch

**Turkey****SCHILLER TÜRKIYE**

Hali Rifat Pasa Mah.  
Darülaceze Cadd.  
Perpa Ticaret Merkezi  
B/Blok No: 41 K: 2  
Okmeydanı-Sisli - Istanbul  
Phone +90 212 210 8681 (pbx)  
Fax +90 212 210 8684  
sales@schiller-turkiye.com

**USA****SCHILLER America Inc.**

11300 NW 41st Street  
Miami, Florida 33178  
Phone +1 786 845 06 20  
Fax +1 786 845 06 02  
sales@schilleramerica.com

**Technical Data AT-1:****System:**

**Dimensions:** 290 x 210 x 69 mm / 11.4 x 8.3 x 2.7 in. (l/w/h)

**Weight:** Ca. 2.9 kg / approx. 6.7 lbs

**Power supply requirements:** 220 – 240 V (nominal), 50/60 Hz or 110 – 115 V (nominal), 50/60 Hz independent operation with built-in rechargeable battery, LED indicator for mains and battery, built-in charger unit

**Power consumption:** Max. 28 VA

**Battery charging time:** 15 hrs. from a completely discharged battery, 3 hrs. to 60 % capacity

**Battery capacity:** 2 hrs of normal use

**Leads:** Standard / Cabrera

**Patient input circuitry:** Fully floating and isolated, defibrillation protected (only with original SCHILLER patient cable)

**Frequency range of digital recorder:** 0 Hz to > 150 Hz (IEC/AHA)

**ECG amplifier:**

- Simultaneous, synchronous registration of all 9 active electrode signals (= 12 standard leads)
- Sampling frequency: 1000 Hz
- Pacemaker detection:  $\geq \pm 2$  mV /  $\geq \pm 0.1$  ms

**Myogram (muscle tremor) filter:**

25 Hz (40 dB/dec) or 35 Hz (20 dB/dec), programmable

**Line frequency filter:** Distortion-free suppression of superimposed

50 or 60 Hz sinusoidal interferences by means of an adaptive digital filter

**Control panel:** Pad keys, LED indicators

**LED indicators:**

- Lead group
- Mains connected
- Battery operation and battery low (indicator flashes)
- Paper tray empty or jammed
- Filter status (on/off)
- Loose electrodes

**Norms:**

**Safety Standards:** IEC/EN 60601-1; UL 60601-1; C22.2 No. 601.1-M90; IEC/EN 60601-2-25; IEC/EN 60601-1-2 (EMC)

**Protection Class:** I according to IEC/EN 60601-1 (with internal power supply)

**Applied Part:** CF according IEC/EN 60601-1

**Conformity:** CE according Directive 93/42/EEC (Medical Devices)

**Classification:** IIa according Directive 93/92/EEC

**Environmental conditions:**

- Temperature, operating: 10° to 40° C / 50° to 104° F
- Temperature, storage: -10° to 50° C / 14° to 122° F
- Relative humidity: 25 to 95 % (non-condensing)
- Pressure, operating: 700 – 1060 hPa

**Printing (built-in thermal printer):**

**Paper speed:** 5 / 25 / 50 mm/s (direct)

**Sensitivity:** 5 / 10 / 20 mm/mV, either automatically adjusted or manually selected

**Chart paper:** Thermoreactive, Z-folded, 90 mm / 3.5 in wide, or Roll, 90 mm wide

**Printing process:**

High-resolution thermal printhead  
8 dots per mm / 200 dots per in (amplitude axes)  
40 dots per mm / 1000 dots per in (time axes, @ 25 mm/s)

**Recording tracks:** 3 channels, positioned at optimal with on 80 mm / 3.2 in., automatic baseline adjustment

**Automatic lead programs:**

3 channel representation of 12 simultaneously acquired standard leads

**Data record:**

- With option M: ECG measurement results (intervals, amplitudes, electrical axes, average complexes with optional measurement reference markings)

**Scope of delivery:**

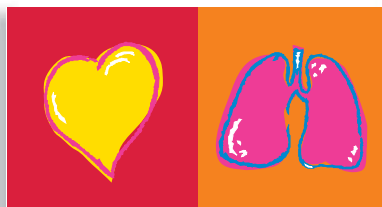
**CARDIOVIT AT-1 basic unit** with 3-channel Resting ECG with 12 simultaneous leads and pacemaker detection

**Accessories:**

- 10-lead patient cable
- 1 set of electrodes, consists of 4 stainless steel extremity electrodes, 6 precordial electrodes or disposable electrodes
- Electrode gel
- Power cable
- 1 pkg. of recording paper
- Operating manual
- Cart (optional)

**Software-Options:**

- Automatic measurement and interpretation program for resting ECGs
- Technical data are subject to change without notice.



# SCHILLER

www.schiller.ch

The Art of Diagnostics

Headquarters: SCHILLER AG, Altgasse 68, CH-6341 Baar, Switzerland, Tel. +41 41 766 42 42, Fax +41 41 761 08 80, sales@schiller.ch



Your specialist: